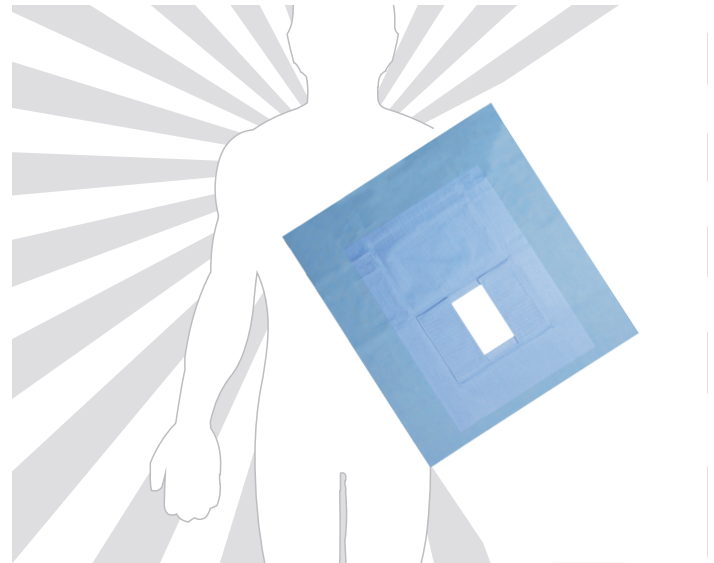
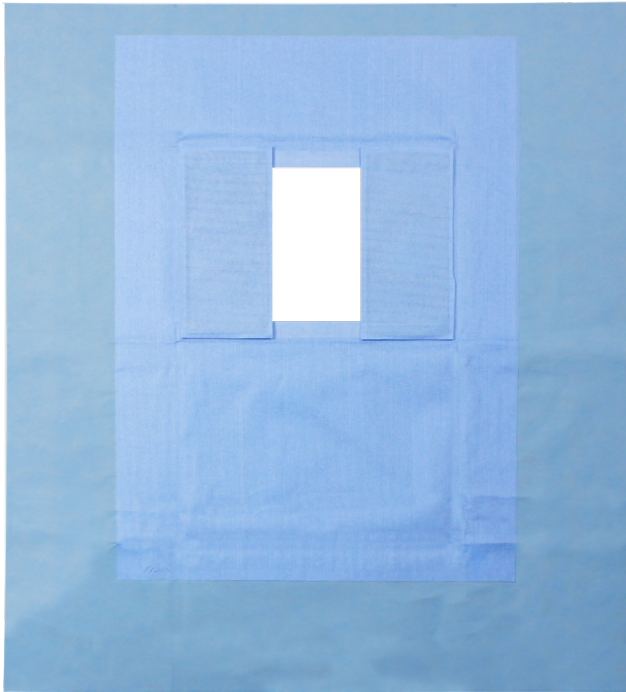




# Scatter Armor Dialysis Drape

## SA-DDD, SA-DDD-CS

### Dialysis Access and Declotting Procedures.



Model Number	Description
SA-DDD	Scatter Armor Dialysis Drapes Box of 10
SA-DDD-CS	Scatter Armor Dialysis Drapes Case of 30
<b>Dimensions</b>	38.5" x 36" Shield Size 4.5" x 9" Fenestration Size
<b>Attenuation</b>	Greater than 92% at 90 kVp
<b>Protection</b>	Greater than 0.25mm LE
<b>Core Material</b>	KIARMOR Bi-Layer Lead-Free



Single Use Only

**STERILE EO**



Infab Corporation  
1040 Avenida Acaso  
Camarillo, CA 93012  
E-mail [info@infabcorp.com](mailto:info@infabcorp.com)  
Call: 805-987-5255  
Fax: 805-482-8424



Do Not Use if Product is Damaged  
Or Compromised

**CE Certification**

Module D & CE Type-Examination certification for PPE Regulation (EU) 2016/425 issued by Notified Body number 0338: BTTG Testing & Certification Ltd. Unit 14, Wheel Forge Way Trafford Park, Manchester M17 EH, United Kingdom.

**WARNINGS**

Product is sterile unless package has been opened or damaged. To be used in addition to, not in place of, routine radiation protection devices.

Declaration of Conformity available at [www.infabcorp.com](http://www.infabcorp.com)

**Consult Instructions for Use**

1. Remove drape/shield from the pouch without compromising sterility.
2. Place drape/shield on the patient
3. Keep the drape/shield out of the direct beam
4. Position the drape/shield on the patient so that it lies between direct beam and the doctor or technician to maximize the safety shadow.
5. Secure the drape/shield in the proper position on the patient drape (using the adhesive strip on drape/shield). Do not place adhesive directly on patient's skin